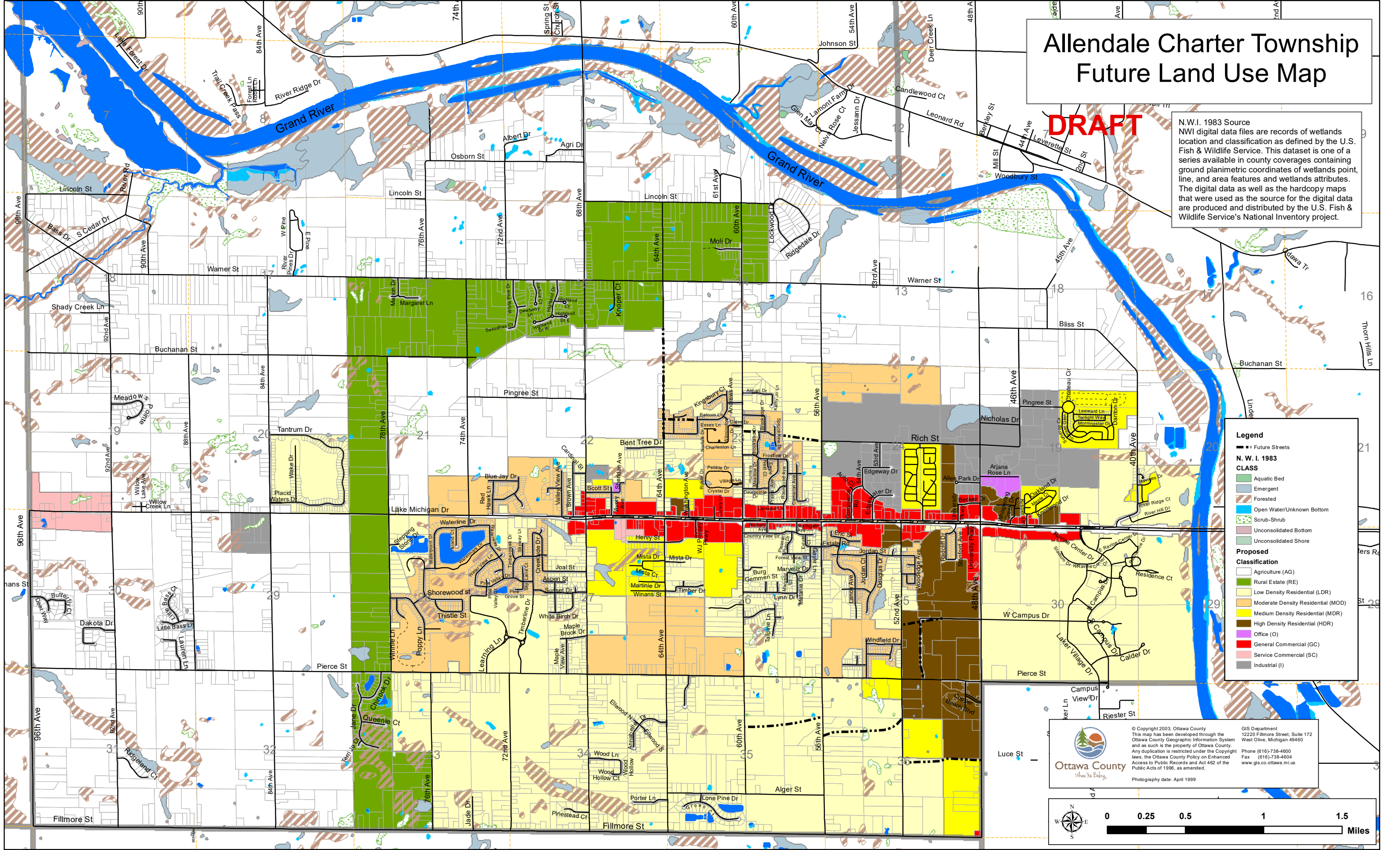


Allendale Charter Township Future Land Use Map

DRAFT

N.W.I. 1983 Source
 NWI digital data files are records of wetlands location and classification as defined by the U.S. Fish & Wildlife Service. This dataset is one of a series available in county coverages containing ground planimetric coordinates of wetlands point, line, and area features and wetlands attributes. The digital data as well as the hardcopy maps that were used as the source for the digital data are produced and distributed by the U.S. Fish & Wildlife Service's National Inventory project.



Legend

--- Future Streets

N. W. I. 1983 CLASS

- Aquatic Bed
- Emergent
- Forested
- Open Water/Unknown Bottom
- Scrub-Shrub
- Unconsolidated Bottom
- Unconsolidated Shore

Proposed Classification

- Agriculture (AG)
- Rural Estate (RE)
- Low Density Residential (LDR)
- Moderate Density Residential (MOD)
- Medium Density Residential (MDR)
- High Density Residential (HDR)
- Office (O)
- General Commercial (GC)
- Service Commercial (SC)
- Industrial (I)

© Copyright 2003, Ottawa County
 This map has been developed through the Ottawa County Geographic Information System and as such is the property of Ottawa County. Any duplication is restricted under the Copyright laws, the Ottawa County Policy on Enhanced Access to Public Records and Act 462 of the Public Acts of 1996, as amended.
 Photography date: April 1999

GIS Department
 12220 Fillmore Street, Suite 172
 West Olive, Michigan 49480
 Phone (616)-738-4600
 Fax (616)-738-4604
 www.gis.co.ottawa.mi.us

